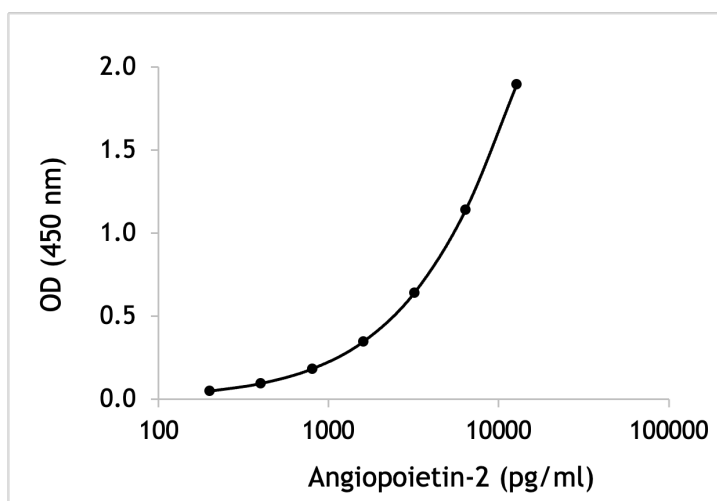


U-CyTech B.V.
Yalelaan 48
3584 CM Utrecht
The Netherlands
+31 85 073 1460
info@ucytech.com
www.ucytech.com

Data sheet **Monkey Angiotensin-2 ELISA kit**

Catalogue no. CT158A (5-plate format)

Species reactivity rhesus macaque



Representative standard curve of monkey Angiotensin-2

Assay range: 200-12800 pg/ml
Sensitivity: 200 pg/ml
Calibration: natural rhesus macaque Angiotensin-2
Type of sample: serum, plasma and culture supernatant

References can be found in the Reference Database at www.ucytech.com/references.

